

CAPTIVE THIMBLE

316 STAINLESS STEEL



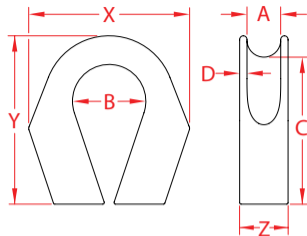
Import



Precision
Cast



Suncor
Exclusive



ITEM	A (size)	B	C	D	X (height)	Y (length)	Z (width)	WT (lb)	PACKAGING TYPE	EACH (qty)	INNER (qty)	CARTON (qty)	UPC
S0126-0013	1/2"	1.50"	2.76"	0.16"	2.95"	3.10"	0.85"	0.43	POLYBAG	1	1	25	791506032311
S0126-0016	5/8"	1.77"	3.41"	0.18"	3.53"	3.84"	1.05"	0.72	POLYBAG	1	1	25	791506032328
S0126-0020	3/4"	1.97"	3.98"	0.24"	4.18"	4.50"	1.30"	1.45	POLYBAG	1	1	25	791506032335
S0126-0025	1"	2.48"	4.74"	0.26"	5.10"	5.40"	1.60"	2.17	POLYBAG	1	1	15	791506032342
S0126-0032	1-1/4"	2.87"	5.37"	0.26"	5.90"	6.09"	1.80"	3.55	POLYBAG	1	1	8	791506032359

NOTE:

MADE FROM GRADE 316 STAINLESS STEEL FOR CORROSION RESISTANCE AND DURABILITY. ITS PRIMARY FUNCTION IS TO HOLD THE WIRE OR FIBROUS ROPE "CAPTIVE" WHILE PREVENTING CHAFFING, MAKING IT IDEAL FOR IN-WATER BOAT TOWING APPLICATIONS. ALL DIMENSIONS ARE NOMINAL (+/- 3%) AND ARE SUBJECT TO CHANGE WITHOUT NOTICE.